

■ **FEATURES**

The SMB chips are our high performance wound chip beads. SMB chips are constructed with a wire wound structure and has a higher current capacity than multilayer chip beads. Mag Layers' SMB chips have the high quality characteristics suitable for your design needs.

High Current Handling

SMB chips are able to withstand currents up to 6A DC.

Low DC Resistance

SMB chip beads have low DC resistance.

Multiple Size Availability

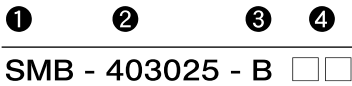
SMB chip beads are available in three sizes: 302520, 403025 and 853025.

■ **APPLICATIONS**

SMB chip beads can be used in a variety of electronics including:

- Computers
- Computer Peripherals
- OA products
- VCRs
- Cordless Telephones

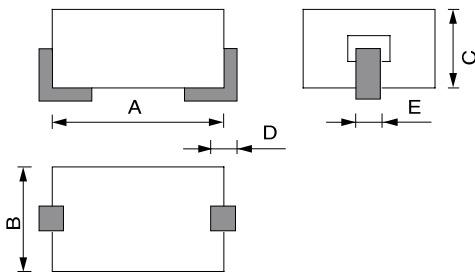
■ **PRODUCT IDENTIFICATION**



- ① Product Code
- ② Dimensions
- ③ Packaging
- ④ Pattern Code

Code	Packaging
B	Bulk
T	Taped

■ **PRODUCT DIMENSIONS**



Dimension in m/m

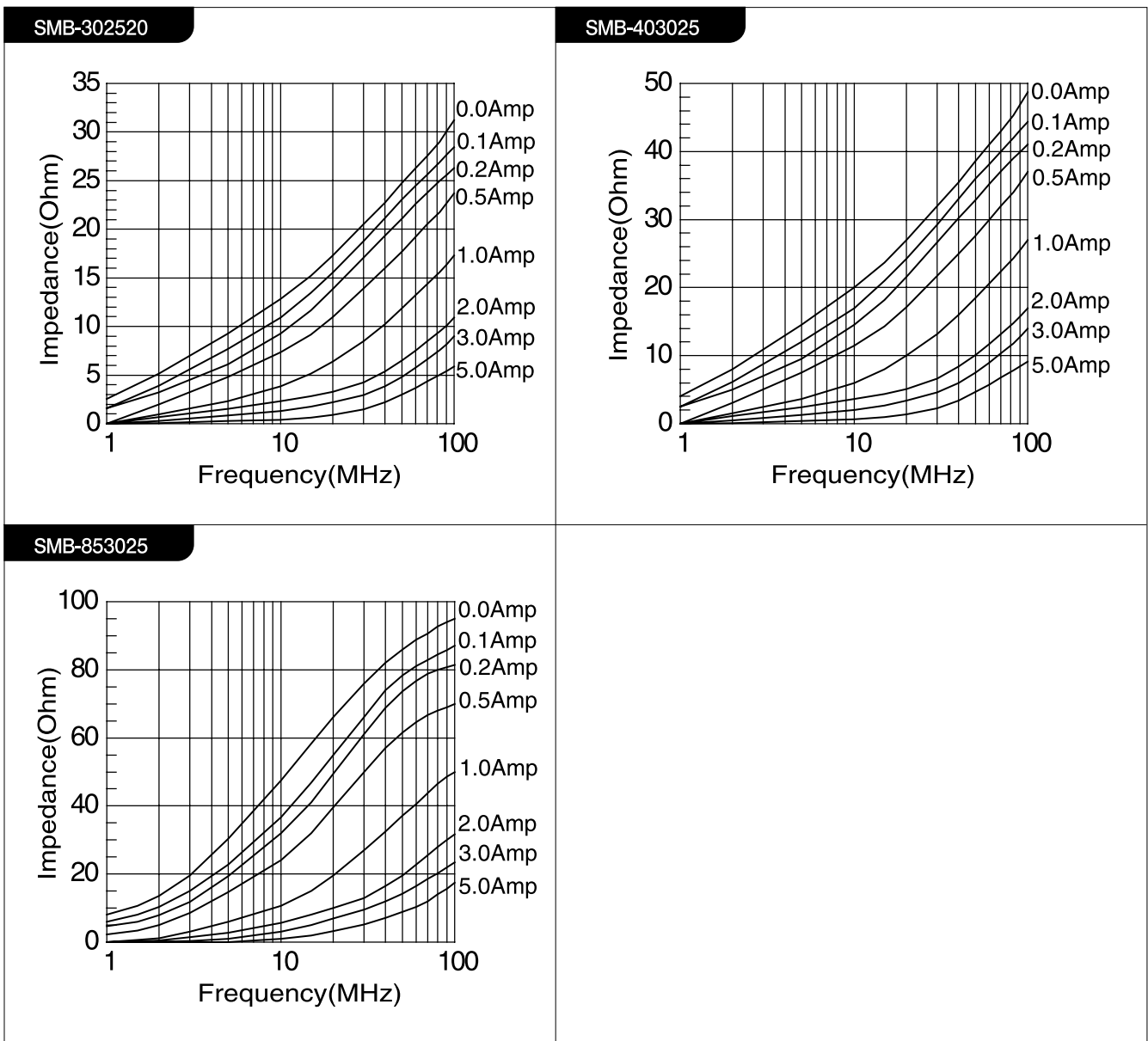
	SMB-302520	SMB-403025	SMB-853025
A	3.0 ± 0.20	4.00 ± 0.20	8.5 ± 0.30
B	2.5 ± 0.15	3.10 ± 0.15	3.1 ± 0.15
C	2.0 ± 0.15	2.54 ± 0.15	2.54 ± 0.15
D	1.20 ± 0.20	1.50 ± 0.50	1.50 ± 0.50
E	1.35 ± 0.65	1.35 ± 0.65	1.35 ± 0.65

WIRED WOUND TYPE

■ **PRODUCT SPECIFICATIONS**

PART NUMBER	IMPEDANCE (Ω) at 25 MHz	IMPEDANCE (Ω) at 100 MHz	R _{DC} (m Ω) Max.
SMB-302520	20	30	0.5
SMB-403025	30	47	0.6
SMB-853025	60	90	0.9

■ **TYPICAL ELECTRICAL CHARACTERISTIC CURVES**



WIPE WOUND TYPE