

■ FEATURES

These power inductors have low DC resistance and large permissible DC current with high reliability.

These power inductors can be directly mounted with special treated electrodes.

Tape and reel packages are available for auto mounting machine.

Magnetic shielded products are available for each series for the consideration of against radiation.

■ APPLICATIONS

For the smoothing circuit of DC-DC converter, as a choke coil or chopper coil.

Suitable for use in power lines of camcorder, LCD set, OA equipment, notebook computer, PDA, and small size communication equipment.

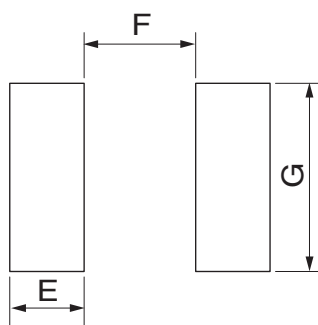
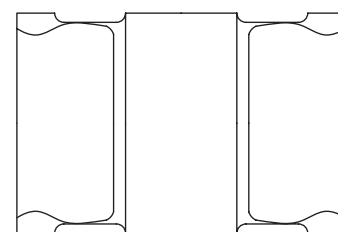
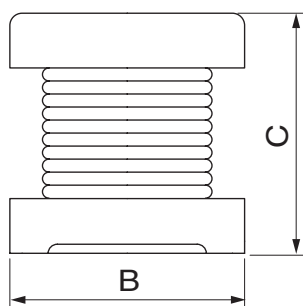
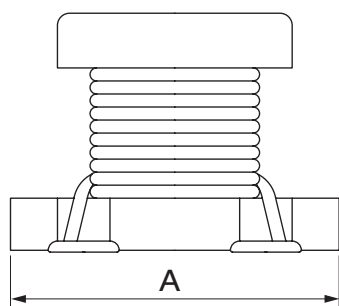
■ PRODUCT IDENTIFICATION

①      ②      ③      ④      ⑤

MSCH - 3225C - 100 J □ □

- ① Product Code
- ② Dimensions
- ③ Inductance Code
- ④ Tolerance Code
- ⑤ Pattern Code

■ PRODUCT SERIES



	A	B	C	E	F	G
2015C	2.0±0.3	1.5±0.2	1.7±0.3	0.9	0.6	1.6
3216C	3.2±0.3	1.6±0.2	1.8±0.3	1.5	1.0	1.5
3225C	3.2±0.3	2.5±0.2	2.0±0.3	1.5	1.0	2.0
4532C	4.5±0.3	3.2±0.2	2.6±0.3	2.0	1.2	3.0
5750C	5.7±0.3	5.0±0.3	4.7±0.3	2.0	2.0	5.0

Dimension in mm

WIRE WOUND TYPE

### ■ PRODUCT SPECIFICATIONS

Part No.	Inductance ( $\mu$ H)	Test Frequency	DC Resistance ( $\Omega$ )Max.				Self Resonant Freq. (MHz)Min.			Permissible DC Current (mA)Max.			
			2015C	3216C	3225C	4532C	3216C	3225C	4532C	2015C	3216C	3225C	4532C
R12	0.12	1MHz		0.112			250				970		
R22	0.22			0.140			250				850		
R47	0.47			0.210			180				700		
1R0	1.0		0.26	0.364	0.078	0.08	100	96	100	650	510	800	1080
1R5	1.5					0.09			85				1000
2R2	2.2		0.52	0.533	0.1261	0.11	50	64	60	500	430	600	900
3R3	3.3		0.65		0.16	0.13			47	480		500	800
4R7	4.7		0.78	0.845	0.195	0.15	31	43	35	300	340	450	750
5R6	5.6		0.84							280			
6R8	6.8		1.30		0.32	0.2			30	250		350	720
8R6	8.6		1.52							230			
100	10		1.62	1.69	0.39	0.24	20	26	23	200	230	300	650
150	15		2.01			0.32			20	150			570
220	22		3.77	3.90	0.923	0.6	14	19	15	100	160	250	420
330	33				1.20	1.0			12			220	310
470	47			10.40	1.69	1.1	10	15	10		100	170	280
680	68					1.7			8.4				220
101	100			15.60	4.55	2.2	7	10	6.8		80	100	190
151	150					3.5			5.5				130
221	220				12	4.0			6.8	4.5		70	110
331	330			14	6.8			5.6	3.6		60	100	
391	390			23				5.0			60		
471	470			26	8.5			5.0	3.0		60	90	
561	560	1KHz			30			5.0			60		

WIRE WOUND TYPE

## ■ PRODUCT SPECIFICATIONS

Part No.	Inductance ( $\mu$ H)	Test Frequency	DC Resistance ( $\Omega$ )Max.	Self Resonant Freq. (MHz)Min.	Permissible DC Current (A)Max.
			<b>5750C</b>	<b>5750C</b>	<b>5750C</b>
R12	0.12	1MHz	0.0098	450	6.0
R22	0.22		0.0112	300	5.3
R47	0.47		0.0182	200	4.8
1R0	1.0		0.027	150	4.0
1R5	1.5		0.031	110	3.7
2R2	2.2		0.041	80	3.2
3R3	3.3		0.050	40	2.9
4R7	4.7		0.057	30	2.7
6R8	6.8		0.104	25	2.0
100	10		0.130	20	1.7
150	15		0.210	17	1.4
220	22		0.266	15	1.2
330	33		0.448	12	0.9
470	47		0.560	10	0.8
680	68		0.938	7.6	0.64
101	100		100KHz	1.204	6.5
151	150	2.660		5.0	0.42
221	220	3.360		4.0	0.32
331	330	6.160		3.1	0.27
471	470	7.560		2.4	0.24
681	680	11.340		1.9	0.19
102	1000	10KHz	14.420	1.7	0.15
222	2200		30.100	1.2	0.10
472	4700		61.040	0.8	0.07
103	10000		140.000	0.5	0.05

## ■ TOLERANCE OF INDUCTANCE

Tolerance	MSCH-2015C	MSCH-3216C	MSCH-3225C	MSCH-4532C	MSCH-5750C
10% (K)	10 ~22 $\mu$ H	10 ~100 $\mu$ H	10 ~ 560 $\mu$ H	10 ~ 470 $\mu$ H	
15% (L)					
20% (M)	1.0 ~ 8.6 $\mu$ H	0.12 ~ 6.8 $\mu$ H	1.0 ~ 6.8 $\mu$ H	1.0 ~ 6.8 $\mu$ H	0.12 ~ 10000 $\mu$ H
+40%, -20% (N)					