

### FEATURES

Low DC resistance & for large currents  
 Flat bottom surface allows for reliable mounting onto the board.  
 Available on tape and reel for surface mounting.

### APPLICATIONS

Ideal for a variety of DC/DC converter inductor applications.  
 Portable telephones.  
 Personal computers.

### PRODUCT IDENTIFICATION

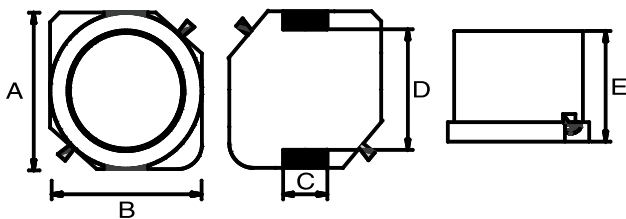
①      ②      ③      ④      ⑤

MSCDRI   63F   100   M   □ □

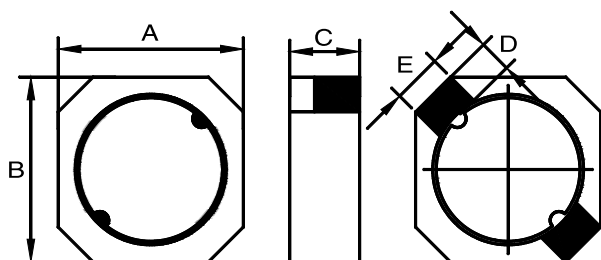
- ① Product Code
- ② Dimensions
- ③ Inductance Code
- ④ Tolerance Code
- ⑤ Pattern Code

### PRODUCT SERIES

Dimension in m/m



Part No.	A±0.3	B±0.3	C±0.2	D typ.	E±0.3
MSCDRI-63F	6.0	6.0	2.0	4.0	2.8
MSCDRI-73F	7.0	7.0	2.0	4.2	3.2
MSCDRI-75F	7.0	7.0	2.0	4.2	4.5
MSCDRI-105F	10	10	3.0	6.0	4.5



Part No.	A(Max)	B(Max)	C(Max)	D typ.	E typ.
MSCDRI-5020F	5.3	5.3	2.0	0.5	1.6
MSCDRI-5030F	5.3	5.3	3.0	0.5	1.6

### ■ PRODUCT SPECIFICATIONS

Part No.	Inductance ( $\mu$ H)	DC Resistance( $\Omega$ )Max.						Permissible DC Current(A)Max.					
		63F	73F	75F	105F	5020F	5030F	63F	73F	75F	105F	5020F	5030F
1R1	1.1						0.020						3.87
1R2	1.2					0.044						2.15	
2R0	2.0						0.027						2.92
2R2	2.2			0.020		0.059				2.55		1.63	
3R3	3.3			0.025			0.034			2.50			2.36
3R5	3.5					0.073						1.34	
4R7	4.7			0.038		0.087	0.045			2.00		1.14	1.87
6R8	6.8			0.049		0.105	0.068			1.70		0.95	1.51
100	10	0.15	0.14	0.045	0.060	0.150	0.090	1.10	1.00	1.30	2.06	0.76	1.33
120	12	0.20	0.16		0.070			1.00	0.94		1.94		
150	15	0.23	0.18	0.065	0.070	0.210	0.142	0.90	0.86	1.10	1.72	0.63	1.05
180	18	0.27	0.25		0.080			0.80	0.78		1.58		
220	22	0.34	0.32	0.076	0.080	0.275	0.208	0.74	0.76	0.90	1.42	0.56	0.86
270	27	0.38	0.36		0.100			0.66	0.64		1.32		
330	33	0.45	0.41	0.120	0.110	0.455	0.257	0.59	0.61	0.82	1.16	0.44	0.72
390	39	0.49	0.47	0.140	0.120			0.54	0.53	0.80	1.10		
470	47	0.69	0.51	0.156	0.140	0.730	0.352	0.50	0.50	0.75	1.00	0.35	0.62
560	56	0.78	0.72		0.190			0.46	0.46		0.93		
680	68	1.07	0.82	0.219	0.210	0.935	0.525	0.42	0.42	0.60	0.85	0.30	0.51
820	82	1.21			0.280			0.38			0.79		
101	100	1.39		0.313	0.340	1.500	0.801	0.34		0.50	0.72	0.23	0.43
121	120	1.90			0.370			0.31			0.63		
151	150	2.18		0.425	0.510			0.28		0.40	0.55		
181	180	2.77			0.570			0.26			0.50		
221	220	3.12		0.650	0.780			0.23		0.33	0.47		
271	270	4.38			0.870			0.22			0.41		
331	330	4.94		0.825	1.200			0.19		0.25	0.37		
391	390				1.340						0.35		
471	470			0.313	1.500					0.22	0.33		

1. TEST FREQ. (L)MSCDRI-63F,73F,75F,105F : 1KHz/250mV

MSCDRI-5020F,5030F : 100KHz/250mV

2. TOLERANCE OF INDUCTANCE: 1~8.2  $\mu$  H  $\pm$  30%(N) 10~470  $\mu$  H  $\pm$  20%(M)

3. The rated current indicates the value of current when the inductance is 15% lower than its initial value at DC superposition or DC current when  $\Delta t=40^{\circ}\text{C}$ , whichever is lower.