

SPECIFICATION FOR APPROVAL

◆ FEATURES

- **Compact Size**

Miniaturized SMD package in low profile and light weight.

- **Low loss**

Low insertion loss, high attenuation.

- **High Soldering Heat Resistance**

High quality termination allows both flow and re-flow soldering methods to be applied.

- **Characteristics**

Eliminates noise over a wide frequency range. Idea for high frequency and space limited designs.

- **Internal Shielding incorporated**

- **Available in tape and reel packaging for automatic mounting**

◆ PART NUMBERING

L T B - 2 5 2 0 - ### x x - A 2
① ② ③ ④

① Product Code

② Dimension Code

③ Series Type (### represents center frequency and xx represents material type)

④ Design Code



CUSTOMER:	CUSTOMER'S PART NO. / DWG NO.
-----------	-------------------------------

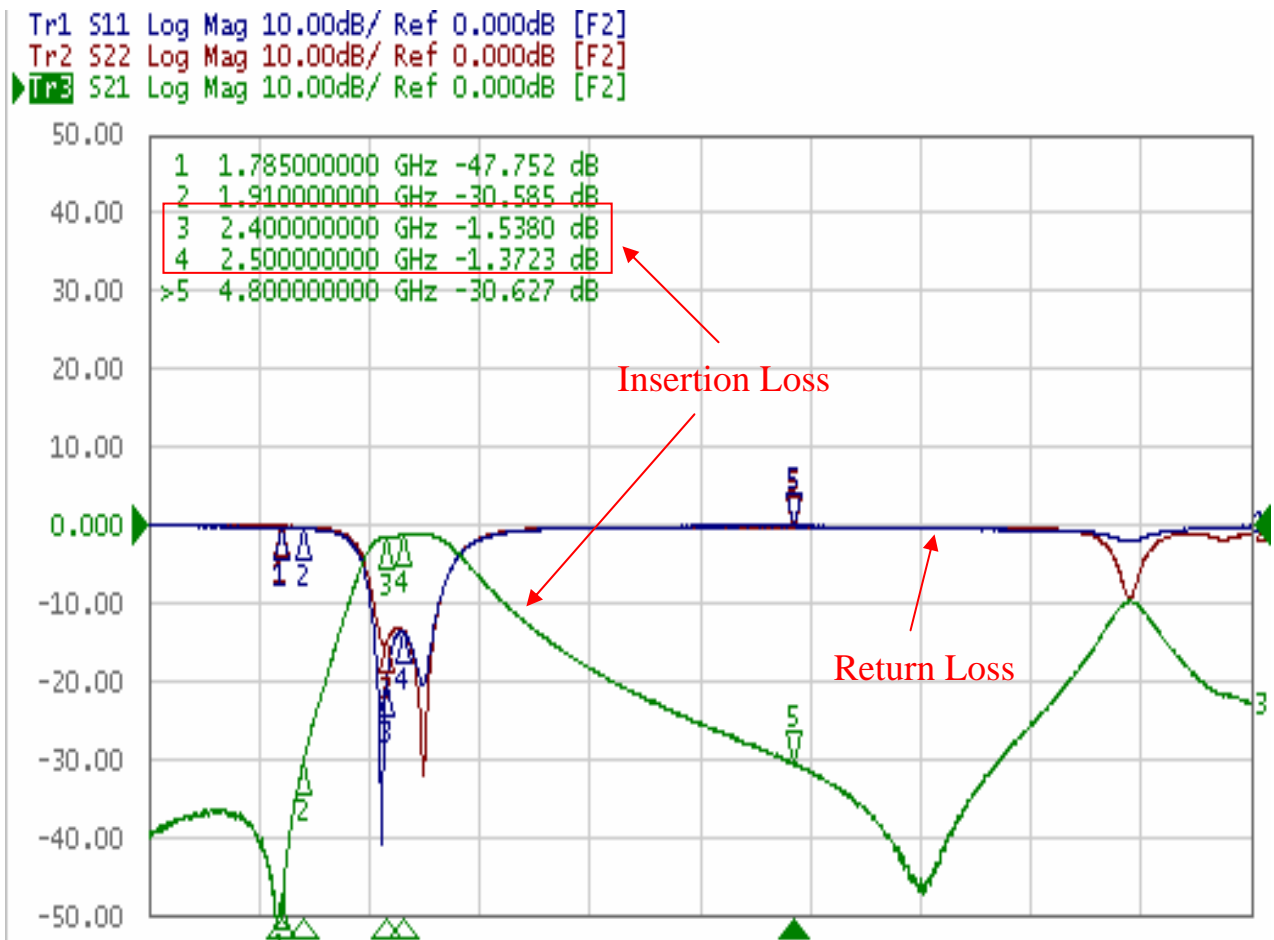
ITEM/PART NO.: LTB-2520-2G4H3-A2

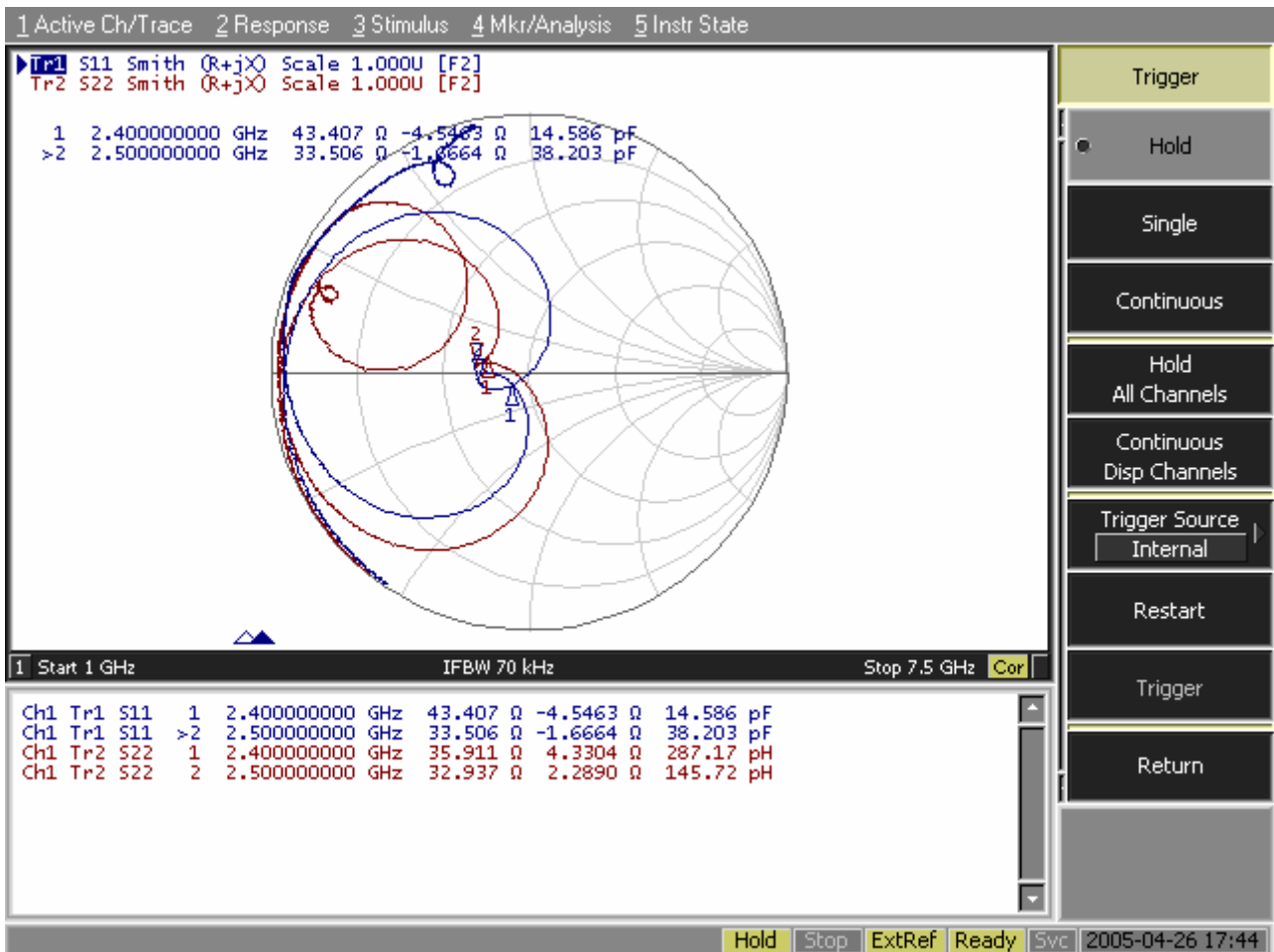
<p>DIMENSION: (m/m)</p>	L	2.5 ± 0.20	mm
	W	2.0 ± 0.20	mm
	T	1.0 ± 0.15 (max.)	mm
	a	0.5 ± 0.2	mm
	b	0.3 ± 0.15	mm
	c	0.3 ± 0.15	mm

Electrical Specifications		TEST INSTRUMENT:	
Pass Band	2400-2500 MHz	Agilent E5071A Network Analyzer	
Insertion Loss in BW	2.0 dB max.		
Return Loss	10 dB min.		
Impedance	50 Ohm		
Attenuation	30dB min at 880 MHz~915 MHz		
	30dB min. at 1710~1785MHz		
	25dB min. at 1850~1910MHz		
	25dB min. at 4800~5000MHz		
DRAWN BY	CHECKED BY	APPROVED BY	SAMPLE NO.

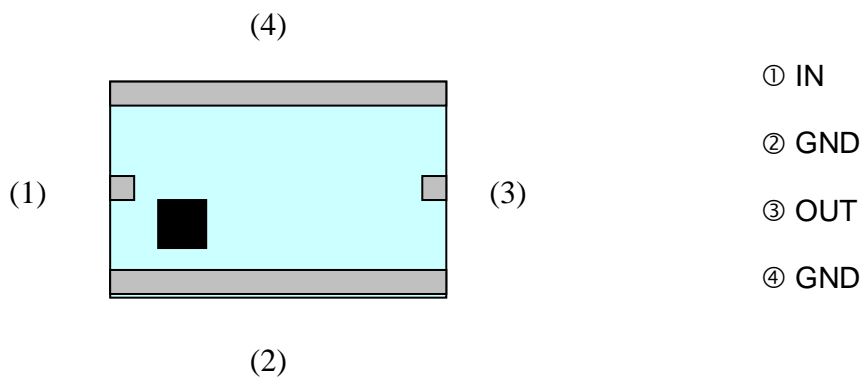


Electrical Characteristic



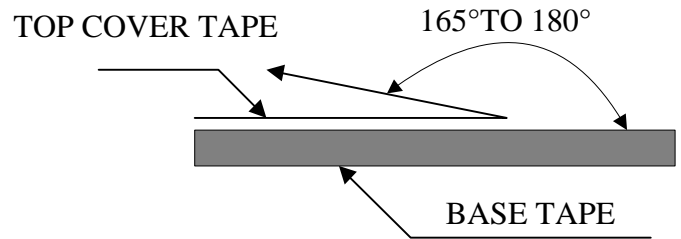
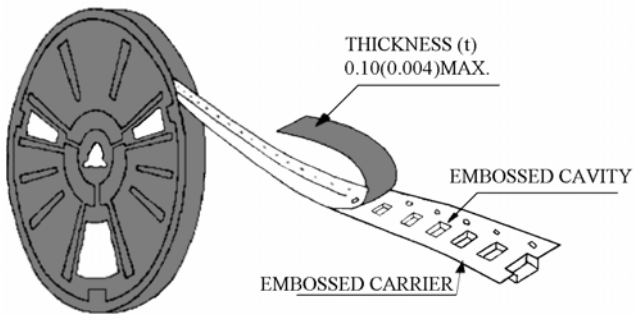


Pin Assignment

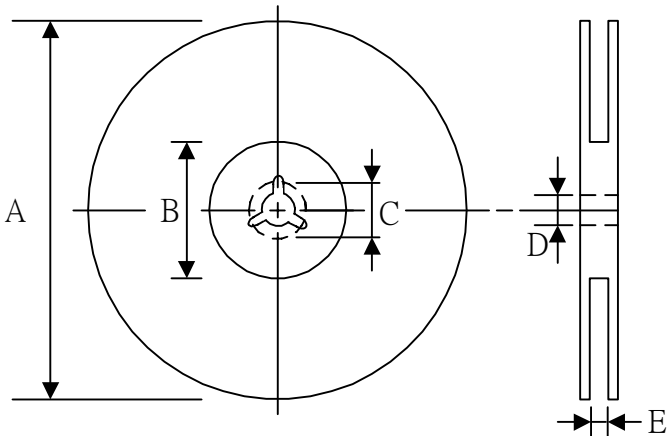


PACKAGING FOR PRODUCT

The force for tearing off cover tape is 10 grams in the arrow direction.

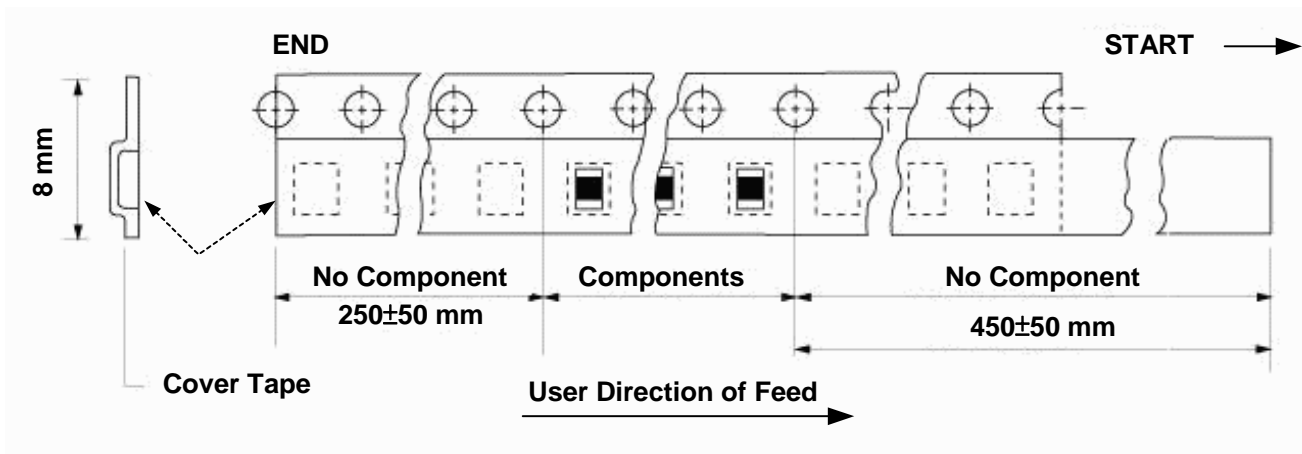


CARRIER TAPE REELS

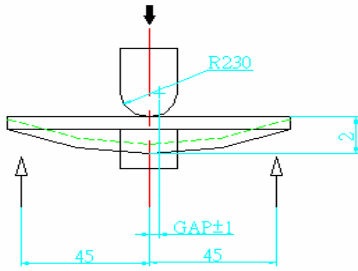


SERIES	453215	451616	322513 321616	321611	201209 160808
PCS/Reel	1000	2000	2500	3000	4000

TYPE	A	B	C	D	E
8 mm	178 ±0.2	62 ±0.2	20.2 ±0.1	13 ±0.1	9 ±0.1
12 mm	178 ±0.3	60 ±0.2	19.3 ±0.1	13.5 ±0.1	13.6 ±0.1



RELIABILITY TEST

Item	Condition	Specification
Thermal shock	-40°C~+85°C for 200 cycles each cycle being 30 min	No apparent damage Fulfill the electrical spec. after test
Humidity resistance	85±2°C, 80~90% R.H. for 500 hours	No apparent damage Fulfill the electrical spec. after test
High temperature resistance	+85±2°C for 500 hours	No apparent damage Fulfill the electrical spec. after test
Low temperature resistance	-40±3°C for 500 hours	No apparent damage Fulfill the electrical spec. after test
Vibration	10 Hz/min~55 Hz/min~10 Hz/min vibration frequency with 1.5 mm amplitude for two hours in x, y, z directions	No apparent damage
Drop shock	Dropped onto printed circuit board from 100cm height three times in x, y, z directions. The terminals shall be protected.	No apparent damage
Soldering heat resistance	Preheating temperature : 150±10°C Preheating time : 1 to 2 minutes Solder bath temperature : 260±5°C Bathing time : 5±0.5 seconds	No apparent damage
Bending test onto printed circuit board	Solder specimen LTCC components on the test printed circuit board (L: 100 x W: 40 x T: 1.6mm) in appended recommended PCB pattern. Apply the load in direction of the arrow until bending reaches 2 mm.  Unit: mm	No apparent damage
Solderability	The dipped surface of the terminal shall be at least 75% covered with solder after dipped in solder bath of 235±5°C for 3±0.5 seconds.	No apparent damage

